

Trustworthy Data

ITAM Tooling Design & Deploy Service



Design & deploy your ITAM tooling right first time

Ensuring your ITAM tooling is reporting your hardware and software estate accurately is critical to the management of your IT estate. You need to ensure your new tooling is designed and deployed successfully. It is well documented that over 40% of IT projects fail to deliver original objectives that were set out, so it's critical you get it right first time.

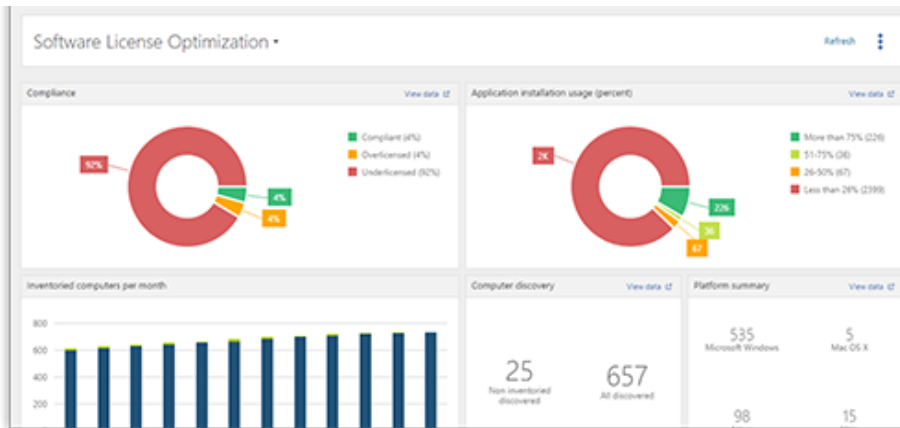
Creating a centralized database successfully to manage business critical assets hardware and software assets and their contracts requires specialist expertise. How your system is designed, configured and integrated with other business systems is only half the story, to be truly successful and deliver on your goals you need to also define robust ITAM policies and processes, designed and implemented throughout the asset lifecycle from acquisition to disposal.

We help you get the most from your ITAM platform

- ITAM best practice across process lifecycle, supporting data automation & digital transformation
- Ensure your tool provides accurate device & software visibility
- Accurate license management & compliance reporting
- Deliver strategic business objectives & requirements
- Asset management centralized, aligned to business & commercial processes
- Effective negotiation & procurement optimizes budgets

“To be truly successful and deliver on your goals, you need to define robust ITAM policies.”





Defining your requirements

It is key to define clearly what your organization needs from its ITAM tool, including...

- **Data sources** – from where key asset data will be collected and systems that need to be integrated
- **Visibility requirements** – data sets needed for each asset, including license & maintenance contracts
- **Dashboards** – what standard and bespoke dashboards need to be created in your tool
- **Reporting** – user requirements for automated reports including frequency and schedules
- **Automation & Alerts** – what functionality users need to perform their roles optimally
- **Policy & Procedures** – that need to be in place to ensure best practice across your organization

“It is well documented that over 40% of IT projects fail to deliver original objectives that were set out, so it’s critical you get it right first time.”